



JUMBO LIFT 3500 HF X-Tend BMW

Flexible platforms:

The ramps can be locked and unlocked to adjust the rail length to long or short vehicles

Flexible length:

In addition to the foldable extensions and flexible installation width, the JUMBO LIFT HF X-Tend has extendable ramps

360°
Access

 **HyperFlow®**
INSIDE



NT-Technologie
from Nussbaum

THE EXPERT FOR MULTI-TASKING

- Adjustable length of the platforms
- Flexible width during installation, no compressed air connection required, quick change of location
- Suitable for a wide range of vehicles, including small vans with a short wheelbase
- Very flat design and inground installation: ideal for lowered vehicles
- X-Tend: 2x variable in length: fixable ramps and platform extensions

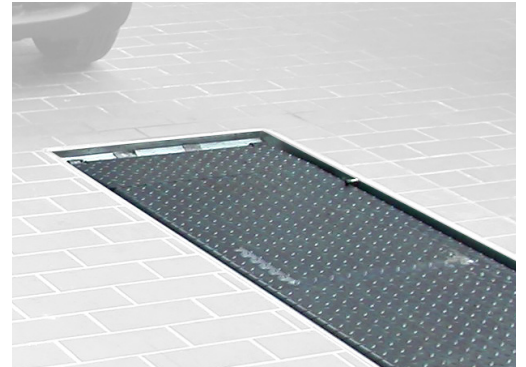


6 REASONS WHY THE JUMBO IS LOW-MAINTENANCE

With its **compact oil submerged power unit** and **high-quality steel construction**, the JUMBO is low-maintenance and durable.

Synchronisation is **automatically regulated** during each full lifting cycle. Thanks to its **redundant hydraulic system**, the JUMBO does **not require a safety latch**.

With few **electrical and no pneumatic parts and no mechanical safety latch**, the JUMBO is **almost completely maintenance-free**. Lubrication nipples on all bolts ensure smooth operation over a long period of time.



Inground installation possible for lowered vehicles, ideally with optional installation tray

THE RIGHT DATA FOR SUCCESS

Lifting capacity (kg)	3500
Lifting / lowering time approx. (sec)	35
Lifting height (mm)	2005
Drive-on height (mm)	105
Recommended total width (mm)	2120
Platform width (mm)	610
Platform length (mm)	1550-2320
Motor (kW)	3
BMW article number	BMW 69 501 113



Maximum length of 2320 mm thanks to extendable extensions



Very flat design: Ideal for lowered vehicles

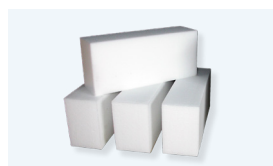
ACCESSORIES



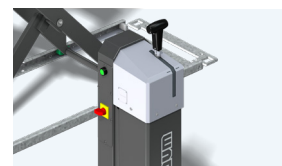
Rubber pyramid block



Polymer pads 50x150x340 mm



Polymer pads 100x150x340 mm



The Nussbaum Commander offers variable lowering speeds

More accessories available